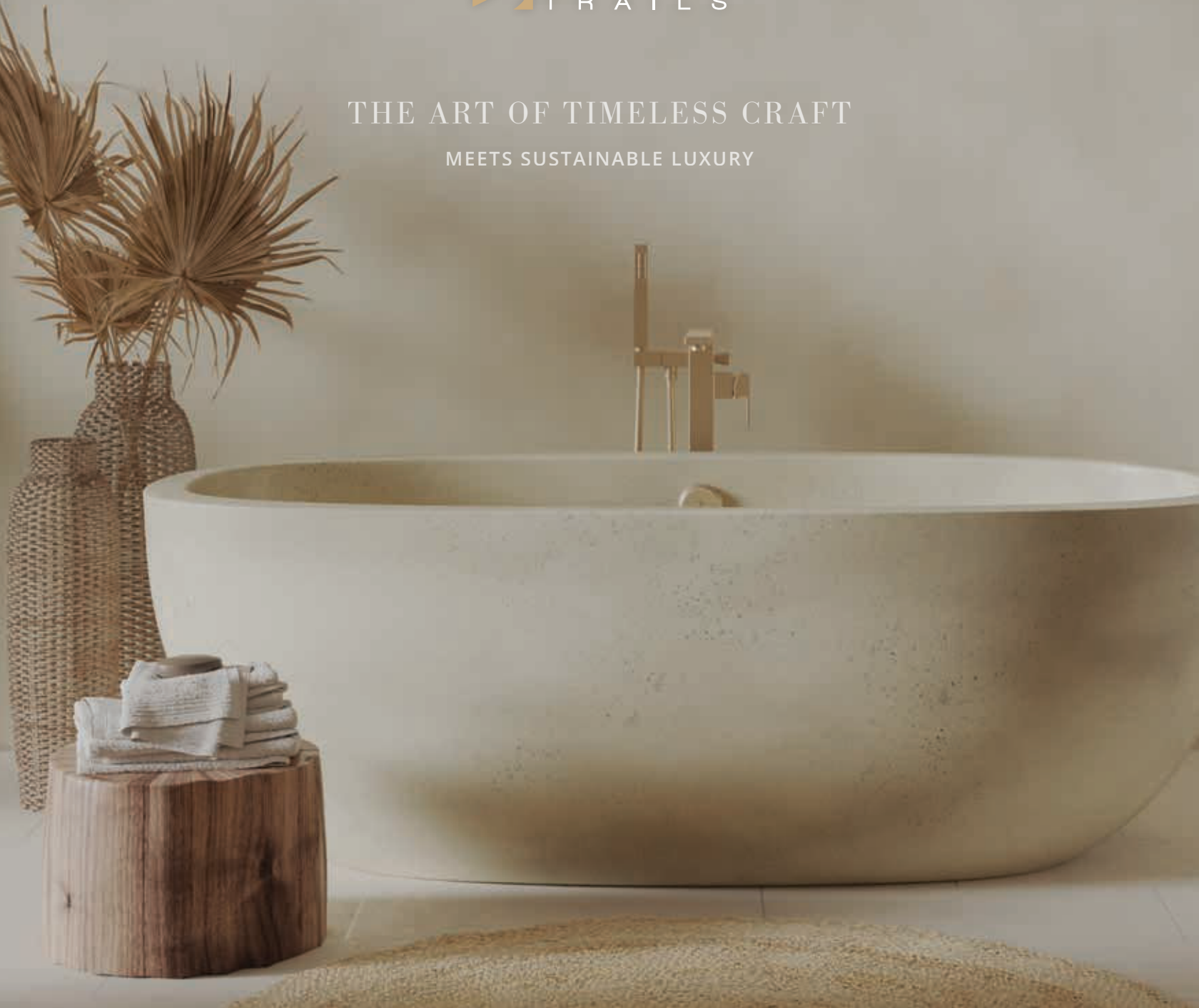




THE ART OF TIMELESS CRAFT

MEETS SUSTAINABLE LUXURY





# BLAZING A TRAIL

## THE NATIVE TRAILS STORY

"I founded Native Trails with a dream of bridging cultures, of combining artisan heritage with innovative design and sustainable materials. Bringing the beauty of undiscovered artisans to homes all over the world is a passion I gratefully live out every day."

Naomi Neilson, Founder/CEO  
[nativetrailshome.com](http://nativetrailshome.com)







# MURANO

*glass*

The **Murano Collection** of spun-glass bathroom sinks artfully combines age-old artisan techniques and materials with contemporary design and function.

Artists in the ancient glassmaking center of Murano, Italy have an impressive 1,500-year-old history of producing useful and beautiful pieces that are seen around the world.

Today, the Murano Collection brings to our world exquisite, one-of-a-kind statement pieces for luxury design, made with pride and care by expert Italian glassmakers.

*Choose from 6 styles and 7 stunning design series.*



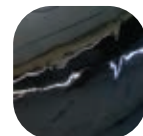
SHORELINE



BIANCO



BEACHCOMBER



ABYSS



ABALONE



SEASPRAY



MARINA



1. Sorrento in Abalone 2. Roma in Seaspray 3. Amalfi in Shoreline  
**View the entire Murano Collection.**











## PRECIOUS METALS COLLECTION



Genuine 24k Matte Gold, Platinum, and Silver are the luxuriant stars of the Precious Metals Collection. Gunmetal finish ingeniously combines all three precious metals into a seductive dark hue.

Italian artisans expertly form sinks from fine fireclay, then apply the glazes by hand. Each piece is triple kiln-fired, then meticulously sealed, creating the ultimate luxury showpiece that will endure the test of time.

### PRECIOUS METALS FINISHES



24K MATTE  
GOLD



GUNMETAL



PLATINUM



SILVER



1. Rendezvous in Gunmetal  
View the full line of Native Trails Precious Metals Bath and Kitchen sinks.







1. Amara in 24k Matte Gold (*shown as undermount*) 2. Bliss in Platinum  
3. Dreamer in Gunmetal 4. Reveler in Silver 5. Bliss in 24k Matte Gold / White  
View the full line of Native Trails Precious Metal Bath and Kitchen sinks.







# Hand Hammered C O P P E R

Centuries of tradition merge with contemporary design, as skilled coppersmiths transform recycled copper into genuine works of art.

A typical copper sink or bathtub takes several days and many thousands of hammer strikes to perfect - along with generations of experience.

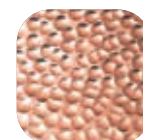
## Available Copper Finishes



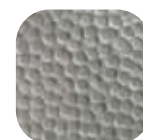
ANTIQUE



TEMPERED



POLISHED  
COPPER



BRUSHED  
NICKEL



POLISHED  
NICKEL



## Maestro Collection

The heavy 15-gauge Maestro Collection basins endure up to 30,000 hammer strikes to bring out the copper's exquisite splendor and distinctive texture, while a complex heating and cooling process creates the remarkable mottling of the unique Tempered finish.



1. Maestro Sonata in Antique 2. Maestro Round in Tempered 3. Maestro Lotus in Brushed Nickel

[View the Native Trails Maestro Collection](#)





## Copper Bath

TRANSFORMATIVE. An inspired convergence of texture, craft and tradition transforms your bathroom into a personal sanctuary and indulges with beauty and practicality. Choose from dozens of styles and five finishes.



1



2



5



3



6



4



7

**NATIVE**  
TRAILS

1. Kohani in Polished Nickel 2. Avila in Brushed Nickel 3. Cozumel in Antique 4. Trough 48 in Polished Copper  
5. Classic in Polished Copper 6. Hibiscus in Brushed Nickel 7. Tatra in Antique  
**View the full line of Native Trails Copper Bath sinks.**







# Copper Kitchen & Bar

EFFORTLESS LUXURY. The distinctive texture and warm glow of hand hammered copper and nickel appeal to the senses, while the simple maintenance makes Native Trails copper kitchen sinks refreshingly practical.



1. Pinnacle in Polished Nickel 2. Rhapsody in Brushed Nickel 3. Farmhouse Duet Pro in Antique  
4. Cocina 33 in Brushed Nickel 5. Cocina 21 in Polished Copper  
View the full line of Native Trails Copper Kitchen sinks.







1

## NICKEL, *Perfected*

Create a sophisticated sensation with the silver sheen of a nickel-finish sink. Plated over our incomparable hammered copper, these high-end Brushed and Polished Nickel finishes deliver maximum luxury and durability, with minimal maintenance.



2



3



4



5



1. Mojito in Brushed Nickel 2. Manhattan in Antique 3. Redondo Grande in Polished Copper  
4. Rio Chico in Brushed Nickel 5. Cantina in Polished Nickel  
**View the full line of Native Trails Copper Bar & Prep sinks.**







## Copper Soaker Tubs

BATHTIME BLISS. A long soak can fix almost anything – especially in a freestanding copper bathtub. Since the time of ancient Crete, the restorative qualities of soaker bathtubs have been legendary. Native Trails ups the ante on the legend with our freestanding tubs – an impressive focal point for the bath; a blissful retreat for body and soul.



1. Aurora 72 in Antique 2. Aurora in Brushed Nickel 3. Aspen in Antique 4. Santorini in Polished Copper

**View the full line of Native Trails Bathtubs.**







# NativeStone®

*Concrete done better*



A masterful blend of contemporary artistry and innovation, NativeStone is exceptional in its lighter weight, one-of-a-kind coloration, and extraordinary stain resistance.

Each piece is sealed with exclusive NativeStone Shield, which penetrates the concrete as never before to create a barrier that is scratch resistant and impervious to water, oils, acids, and food.

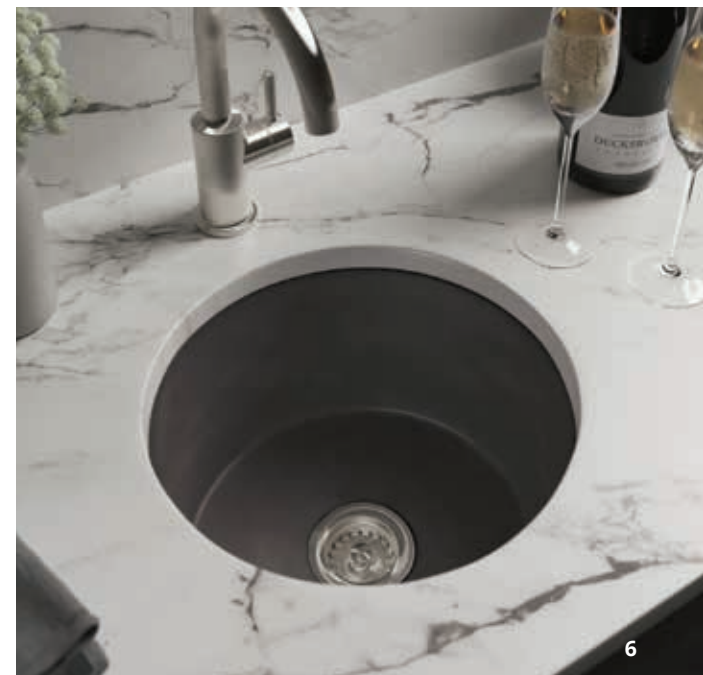
## **NativeStone Finishes**



1. Quartet in Charcoal  
View the full line of NativeStone Kitchen sinks.







## NativeStone *Kitchen & Bar*

NativeStone sinks are sealed with NativeStone Shield™ for ultimate protection and durability.



1. Farmhouse 3018 in Charcoal 2. Farmhouse Double Bowl in Earth 3. Pacifica in Sand  
4. Ventana in Pearl 5. Olivos in Ash (shown as undermount) 6. Malibu in Slate (shown as undermount)  
**View the full line of NativeStone Kitchen sinks.**







## NativeStone Bath

A mesmerizing representation of contemporary artistry and innovation with rustic sensibilities.  
Choose from nine finishes and twenty eco-friendly bath styles.



1. Natoma 24 in Ash 2. Nipomo in Forest  
3. Arcata 30 in Sage 4. Anacapa in Sand 5. Morro in Terracotta  
**View the full line of NativeStone Bath sinks.**







1



2



3



4

## NativeStone Soaker Tubs

Soak up that organic beauty and luxurious silky-smooth texture. Hand formed from a sustainable blend of natural materials, NativeStone is 40% lighter than standard concrete.



1. Avalon 66 in Forest 2. Mendocino in Ocean 3. Avalon 62 in Earth 4. Mendocino in Ash  
View the full line of Native Trails Bathtubs.







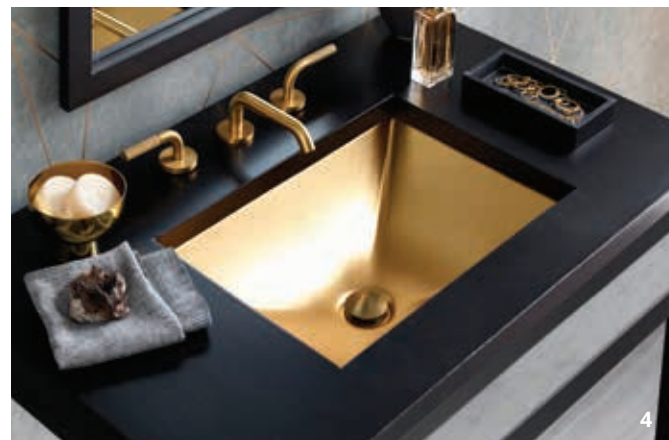
1



2



3



4



5



6



7

## Vanity Tops

Made for durability and design flexibility, our vanity tops pair natural materials with timeless finishes. Available with integrated sinks or cutouts to accommodate most Native Trails sinks, they come in multiple sizes and configurations. Choose from six NativeStone® finishes or classic Carrara Marble.

1. 48" NativeStone Vanity Top in Ash with Arcata 30 in Earth 2. 30" Carrara Vanity Top with Avila in Polished Nickel  
3. 36" NativeStone Vanity Top in Ash with Anacapa in Forest 4. 36" NativeStone Vanity Top in Charcoal with Amara in 24K Matte Gold  
5. 60" Palomar in Sand 6. 30" NativeStone Vanity Top for Floating Vanity in Pearl with Morro in Sage 7. 48" Capistrano in Earth

**View the full line of Native Trails NativeStone Vanity Tops.**







## Winemaker Series

Handcrafted on California's central coast using upcycled French and American white oak staves sourced from local wineries, this exquisite collection embodies the art of repurposing with a contemporary, yet classic twist.



1. Winemaker 48" Vanity and Large Mirror in Charred Oak with Palomar 48" in Ash
  2. Winemaker 30" Vanity and Small Mirror in Cask Oak with Maestro Sonata in Tempered
  3. Winemaker 30" Floating Vanity and Small Mirror in Charred Oak with Trough 3019 in Ocean
  4. Winemaker 48" Vanity and Large Mirror in Cask Oak with Tolosa in Sage
- [View the entire Winemaker Series.](#)**







## TOPANGA SERIES

Solid walnut, with its rich, naturally variegated coloration, is the canvas for master European woodworkers who craft each exquisite piece of the Topanga Collection.

The wood is sustainably harvested from the rich forests of the Danube riverbanks and the high mountains of eastern Europe, and the woodworking traditions go back many generations.



1. Topanga 48" Vanity with Sorrento in Beachcomber 2. Topanga 36" Vanity with Roma in Marina  
3. Topanga 30" Vanity with Lido in Shoreline 4. Topanga Floating Vanity with Trough 3619 in Pearl

**View the entire Topanga Series.**







1



## THE AMERICANA COLLECTION

*With character as rich as its history*

The Americana Collection is handcrafted in the U.S.A. from beautifully textured wood rescued from structures of the past, built to last for generations. The hardware is forged by blacksmiths, and the multi-layered finishes are carefully hand applied.

***Bath vanities and mirrors are available in four finishes and three sizes, for ample design versatility.***



CHESTNUT



ANVIL



DRIFTWOOD



WHITEWASH



2



3



4



1. Americana 30" Vanity and Mirror in Driftwood with Tolosa in Pearl
  2. Americana 30" Vanity in Anvil with Palomar 30" in Charcoal
  3. Americana 48" Vanity in Whitewash with Palomar 48" in Pearl
  4. Americana 30" Vanity and Mirror in Chestnut with Rolled Classic in Antique
- View the entire Americana Collection of Vanities and Mirrors.**







## THE SOLACE COLLECTION

Solid FSC certified oak pairs beautifully with cool concrete to create a transitional bath vanity and mirror collection. Complete the look with a coordinating NativeStone vanity top.

### *Solace Vanity Finishes*



SUNRISE  
OAK

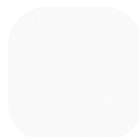


MIDNIGHT  
OAK

### *Available finishes for NativeStone lower shelf:*



ASH



PEARL



2



3



4



1. Solace 60" Vanity and 28" Mirror in Sunrise Oak with Palomar 60" in Ash
  2. Solace 48" Vanity and 28" Mirror in Sunrise Oak with Sorrento in Seaspray
  3. Solace 60" Vanity in Midnight Oak with Nipomo in Forest
  4. Solace 30" Vanity and 22" Mirror in Midnight Oak with Palomar 30" in Ash
- View the entire Solace Collection of Vanities and Mirrors.**







1

## CONTEMPORARY METALS



Zaca Wall Mount (left) pairs sleek stainless steel with NativeStone™ to elevate the bath as never before. ADA compliant, Zaca is well suited for both residential and hospitality settings.

The Cuzco Collection (right) features a bold combination of materials and textures, from hand hammered copper to graceful Carrara marble.



2



3



4



1. Zaca 36" Wall Mount with Trough 3619 in Pearl 2. Cuzco 30" Vanity in Antique with Avila in Antique  
3. Cuzco 30" Vanity in Brushed Nickel with Cuyama in Ash 4. Cuzco 48" Vanity in Carrara with Sorrento in Bianco  
**View the full line of Native Trails Contemporary Metal Vanities and Mirrors.**







## THE VINTNER'S COLLECTION

Featuring wine-making materials salvaged from the heart of California's wine country, the Vintner's Collection reincarnates oak barrels and staves into elegantly functional furniture and mirrors with a unique history.

Vintner's Vanities and Mirrors are made from reclaimed, wine-stained oak staves used to flavor wine during the fermentation process. The oak staves soak in wine for months, infusing tannins and aromas from the wine while absorbing the color of the grapes.



*Choose from two finishes and four shapes and sizes, to complement a wide variety of design styles.*



CHARDONNAY



NOIR



1. Vintner's Floating Vanity with Drawer in Chardonnay with Trough 3619 in Pearl
  2. Vintner's 48" Vanity and Mirror in Noir with Amara in Gunmetal
  3. Vintner's 36" Vanity and Mirror in Chardonnay with Nipomo in Sage
- View the entire Vintner's Collection of Vanities and Mirrors.**







## SINK ACCESSORIES

Native Trails drains and strainers are designed for a perfect fit while enhancing the luxurious look and feel of our basins. Their unparalleled quality matches the superior craftsmanship of their counterparts.

### AVAILABLE DRAIN FINISH OPTIONS

Brushed Gold PVD (3), Brushed Nickel (1), Champagne Bronze PVD, Polished Chrome, Gunmetal, Matte Black (4), Oil Rubbed Bronze (2), Polished Copper, Polished Nickel PVD, Polished Solid Copper, Solid Copper, Weathered Copper

### AVAILABLE BOTTOM GRID FINISH OPTIONS

Stainless Steel (1), Matte Black







## HOSPITALITY PROJECTS

Native Trails has unique expertise in producing one-of-a-kind handcrafted products - with large-scale availability. Thoughtfully crafted, designed to stand the test of time.



Bring your vision to life with custom sizes and shapes in NativeStone® and Hammered Copper. Our Custom Program makes it easy to create one-of-a-kind pieces tailored to your space, whether residential or hospitality. Contact a Native Trails dealer or [custom@nativetrailshome.com](mailto:custom@nativetrailshome.com).

## CUSTOM PROGRAM







*Using business as  
a force for good*



NATIVETRAILSHOME.COM